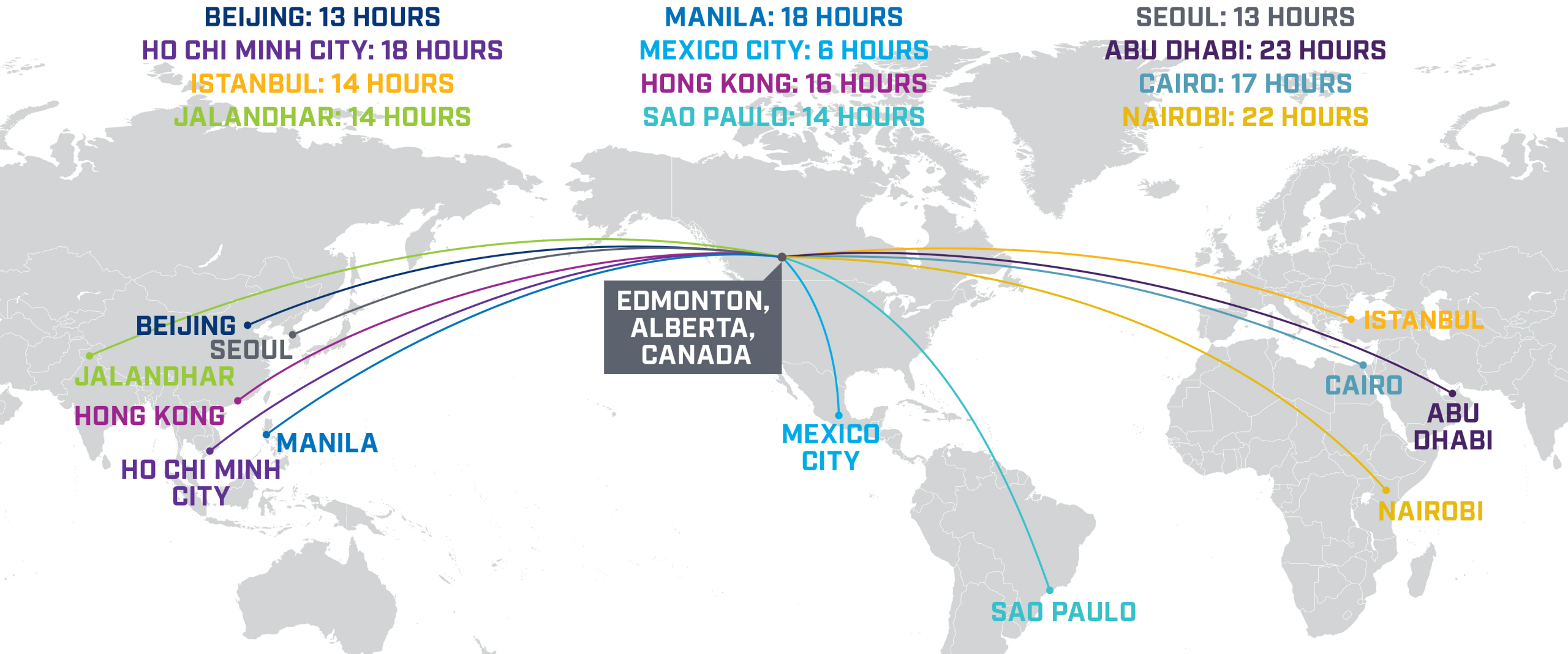




**NORTHERN ALBERTA
INSTITUTE OF
TECHNOLOGY**

**WE
ARE** **ESSENTIAL**

TRAVEL TIMES



CANADA



CANADA



Source: Google Images

CANADA



Source: Daveynin



Source: jyl4032



Source: Laurent GASS



Source: IQRemix

CANADA

CANADA'S POPULATION: 37 MILLION

- Canada admitted more than 300,000 permanent residents last year
- Canada is one of the few countries that offer a post-graduation work permit for international students
- In 2018, 54,000 international students became permanent residents!
- We recognize that international students make excellent candidates for permanent residency



ALBERTA, CANADA



ALBERTA, CANADA



WORK-LIFE BALANCE

- More days of sun than other provinces
- Alberta has been Canada's leader in socio-economic well-being for the past 10 years!
- The Human Development Index is a measure of socio-economic well-being and includes measures of life expectancy, education and income.
- In 2016, Alberta was second in Canada in the human development index and sixth in an international comparison with 175 OECD nations!

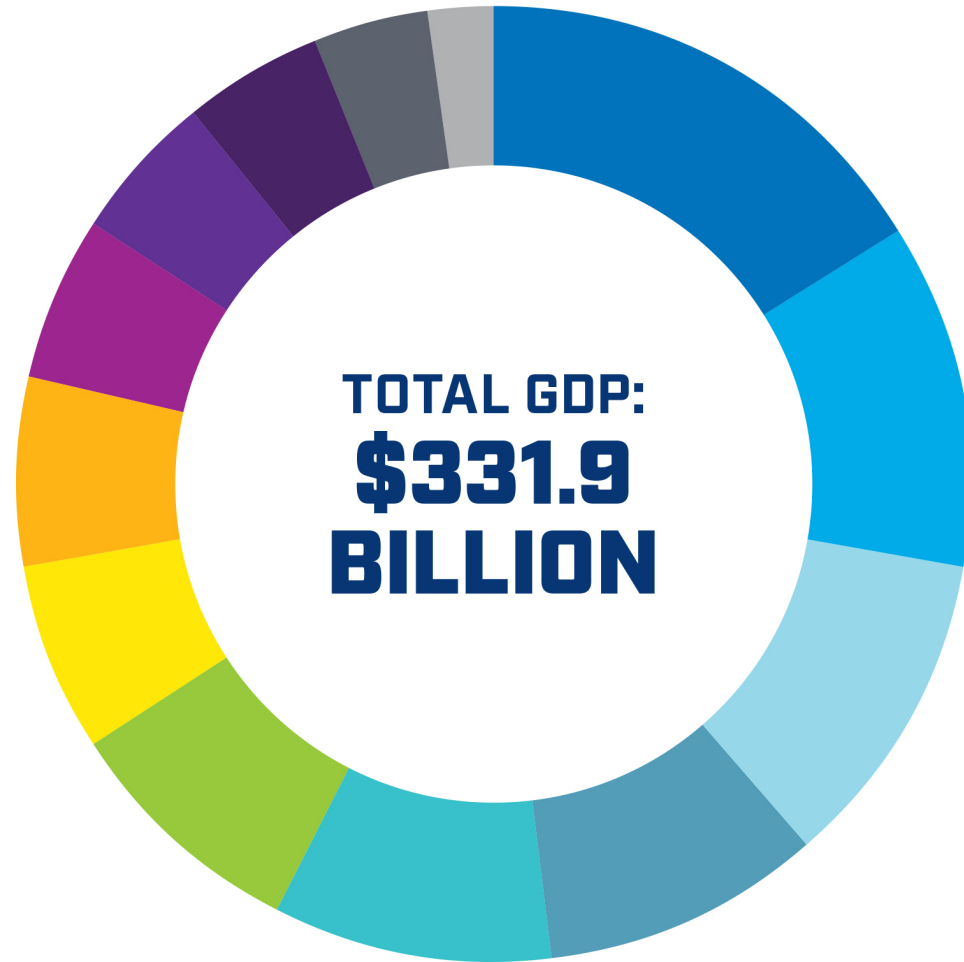
ALBERTA, CANADA

ALBERTANS

- Alberta has the youngest population of all Canadian provinces with a median age of 36.9, in comparison to a median age of 40.8 in Canada
- 1 in 6 Albertans was born outside Canada, making Alberta one of the most-multinational and multi-cultural provinces in the country!
- About half of Alberta's population holds a post-secondary credential

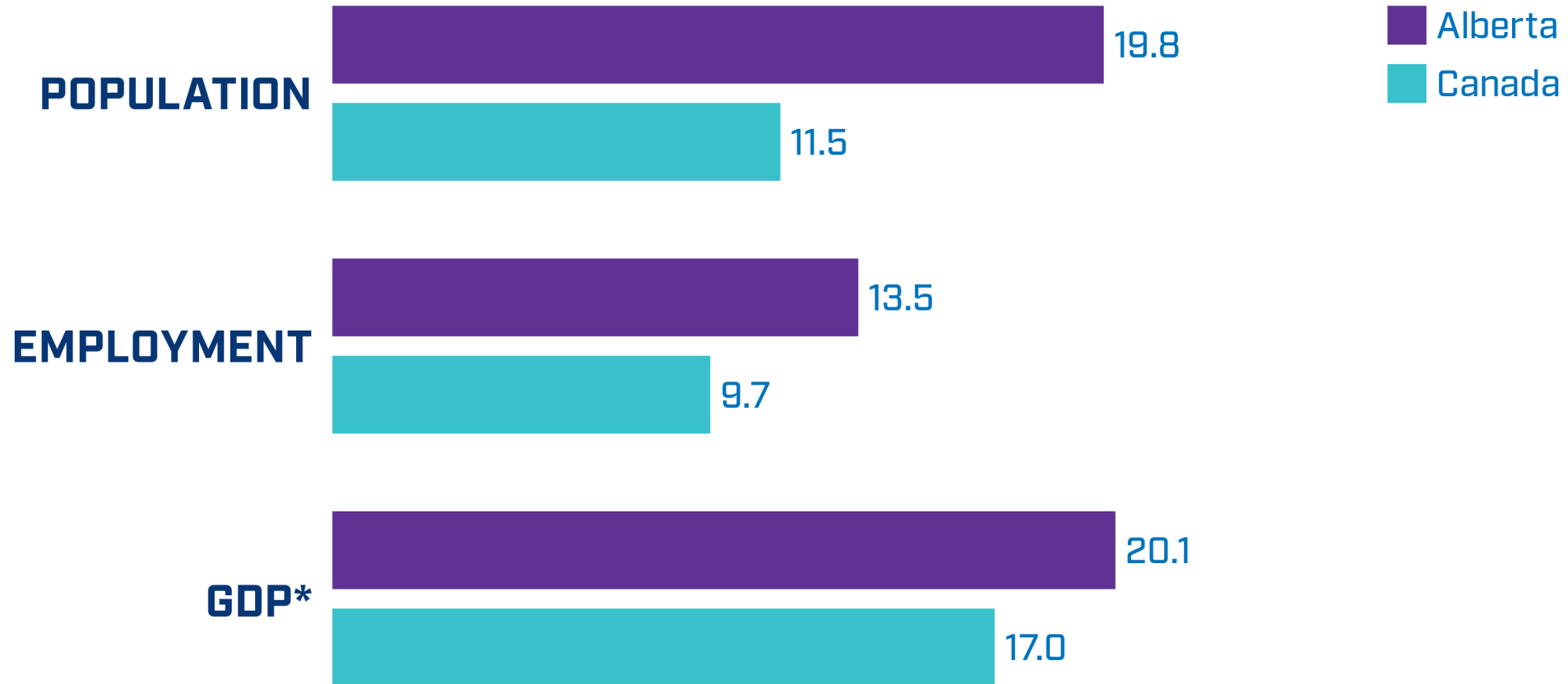


ALBERTA'S GDP PERCENTAGE DISTRIBUTION IN 2017



- Oil, Gas and Mining: 16.3%
- Real Estate: 11.8%
- Business and Commercial Services: 10.8%
- Construction: 9.5%
- Retail and Wholesale: 9.3%
- Manufacturing: 8.3%
- Transportation and Utilities: 6.6%
- Health Care: 6.4%
- Public Administration: 5.4%
- Tourism and Consumer Services: 5.0%
- Finance and Insurance: 4.7%
- Education: 4.1%
- Agriculture and Forestry: 2.0%

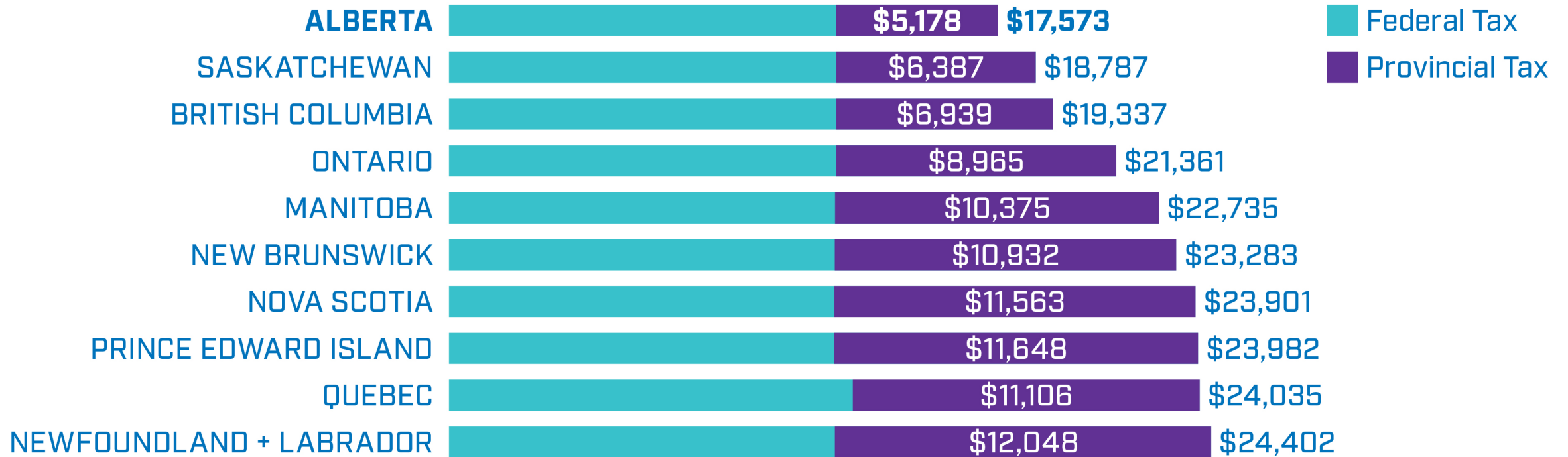
2008-2018 ALBERTA GROWTH PERCENTAGE CHANGE



*GDP growth for the period 2007 to 2017. Source: Statistics Canada and Alberta Economic Development and Trade.

COMPARISON OF PROVINCIAL TAXES BY PROVINCE

(Two-Income Family of Four - \$100,000)



Source: Alberta Treasury Board and Finance (as of March 2018)

Note: Comparisons are for a family with a 60/40 income split and two children aged 6 and 12. It includes the impact of income taxes, sales taxes, fuel taxes, health premiums and payroll taxes.

ALBERTA WAGE OVERVIEW (Government of Alberta)

INDUSTRY	EDMONTON	ALL REGIONS
Agriculture	\$19.61	\$21.95
Forestry, Logging, Fishing and Hunting	N/A	\$32.50
Oil and Gas Extraction	\$37.09	\$47.00
Utilities	N/A	\$44.90
Construction	\$34.59	\$34.02
Manufacturing	\$29.35	\$28.65
Wholesale Trade	\$32.46	\$30.32
Retail Trade	\$23.09	\$22.56
Transportation and Warehousing	\$30.32	\$30.18
Information, Culture and Recreation	\$21.30	\$22.71
Finance, Insurance, Real Estate and Leasing	\$34.65	\$33.13

INDUSTRY	EDMONTON	ALL REGIONS
Professional, Scientific and Technical Services	\$39.11	\$40.88
Business, Building and Other Support Services	\$24.79	\$24.06
Educational Services	\$36.77	\$38.67
Health Care and Social Assistance	\$31.12	\$30.64
Accommodation and Food Services	\$16.81	\$16.96
Other Services (Repair, Personal Services and Related)	\$29.65	\$27.56
Public Administration	\$41.41	\$40.89
Mining and Quarrying	\$N/A	\$37.36
ALL INDUSTRIES	\$29.51	\$29.70

N/A: Not Available. Source: 2019 Alberta Wage and Salary Survey. Survey results can be found at www.alis.alberta.ca/wageinfo

STUDY AT NAIT + WORK IN CANADA



HEALTH INSURANCE

STUDENTS

Students with a valid study permit qualify for free health care in Alberta

GRADUATES

Graduates with a valid Post Graduate Work Permit qualify for free health care in Alberta

EDMONTON



CAPITAL CITY OF ALBERTA AND CANADA'S FESTIVAL CITY

- more festivals every year than any city in Canada.
- In the winter, Edmonton continues to host festivals!

A BUSINESS AND POLITICAL HUB

- has a strong value of entrepreneurship
- there is a lot of support to start your own business.

A HIGH-TECH HUB

- Home of the National Institute for Nanotechnology
– National Research Council of Canada
Nanotechnology Research Centre

EDMONTON

POPULATION: 1.3M

- Projection to grow by 65,000 per year for the next 15 years.
- Population density of 123 people per square kilometre.

AVERAGE AGE: 35

- One of the youngest city in Canada.



EDMONTON

FOUR DISTINCT SEASONS

- Average winter temp is -10

THE LARGEST URBAN PARK IN NORTH AMERICA

- 10 times larger than Central Park in Manhattan
- Over 160 km of trails!



LIVING COSTS IN EDMONTON

PER MONTH

Rent:	\$600-\$1,000
Food:	\$300-\$400
Other:	\$200-\$300
<hr/>	
TOTAL:	\$1,100-\$1,700

POTENTIAL PART-TIME EARNINGS:

\$15/hour (min. wage) x 20 hours x 4 weeks =
\$1,200 / month

(approximately 30 weeks in a year)

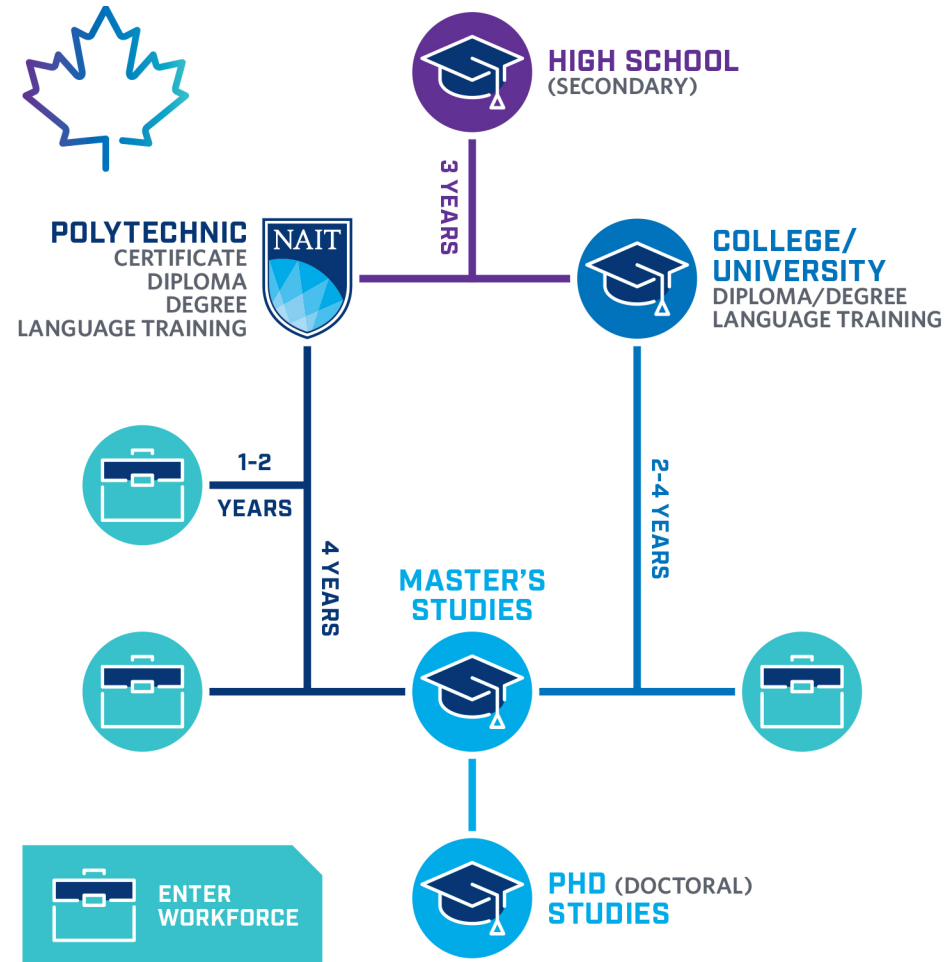
ESL STUDENTS

Work only on-campus

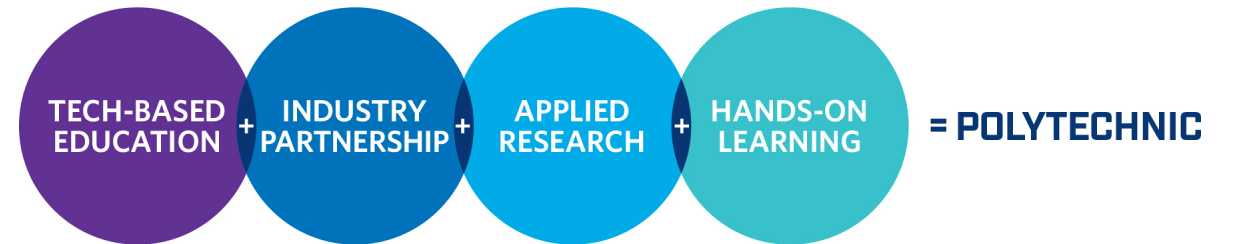
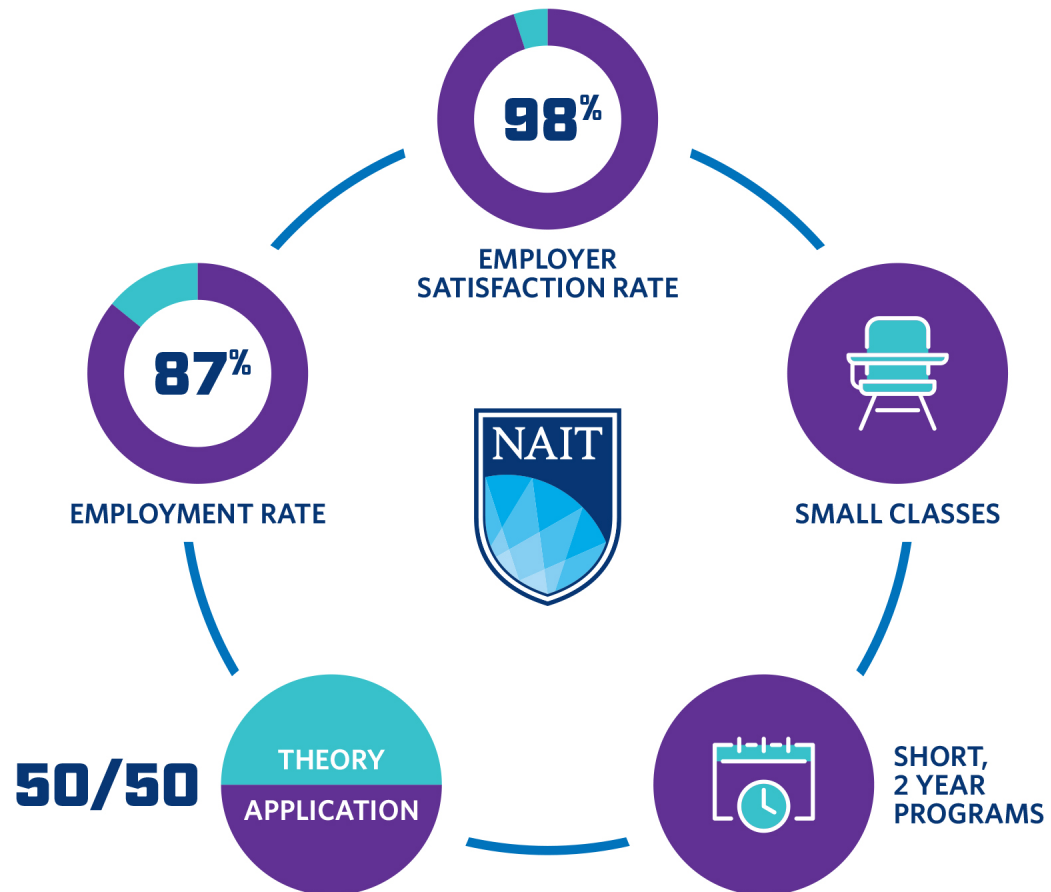
DEGREE/DIPLOMA/CERTIFICATE STUDENTS:

Work 20 hours/week off-campus, and
unlimited hours during scheduled breaks
(approximately 22 weeks in a year)

CANADA'S HIGHER EDUCATION SYSTEM



POLYTECHNIC EDUCATION



NAIT



FOUNDED IN 1962

4 CAMPUSES

- More than 40,000 students
- Over 1,900 international students from over 88 countries enrolled
- 2nd largest polytechnic in Canada
- 3rd largest post-secondary in Alberta



APPLIED RESEARCH

- Instructors with multiple years of industry experience
- Focus on presentations, research projects, and relevant work skills
- Work placement opportunities
- Networking opportunities

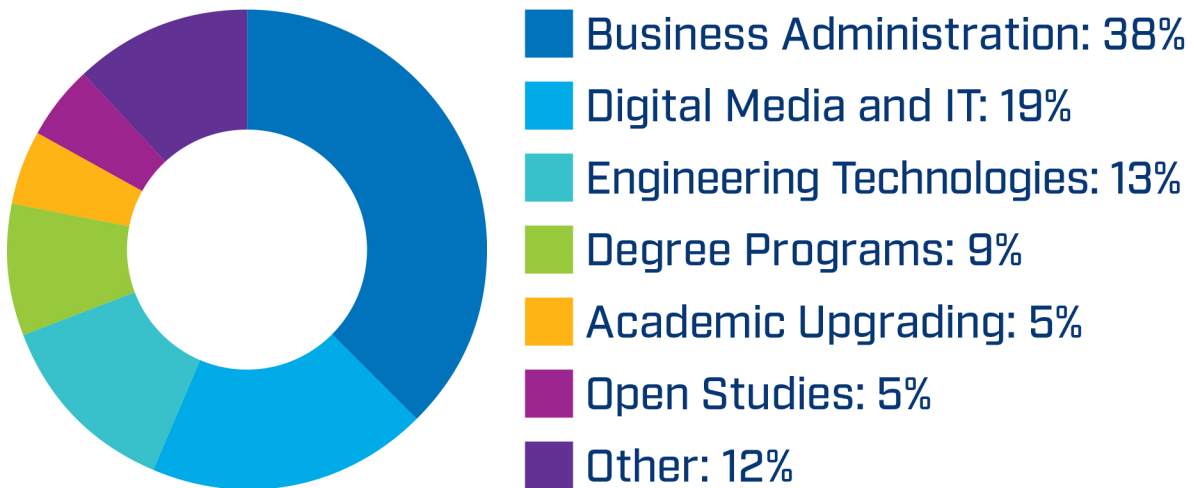
INDUSTRY PARTNERSHIP

- NAIT produces a skilled workforce that is directly aligned with industry needs
- Programs developed with industry input
- Research is industry driven
- Support polytechnic education and research needs in Alberta, and worldwide

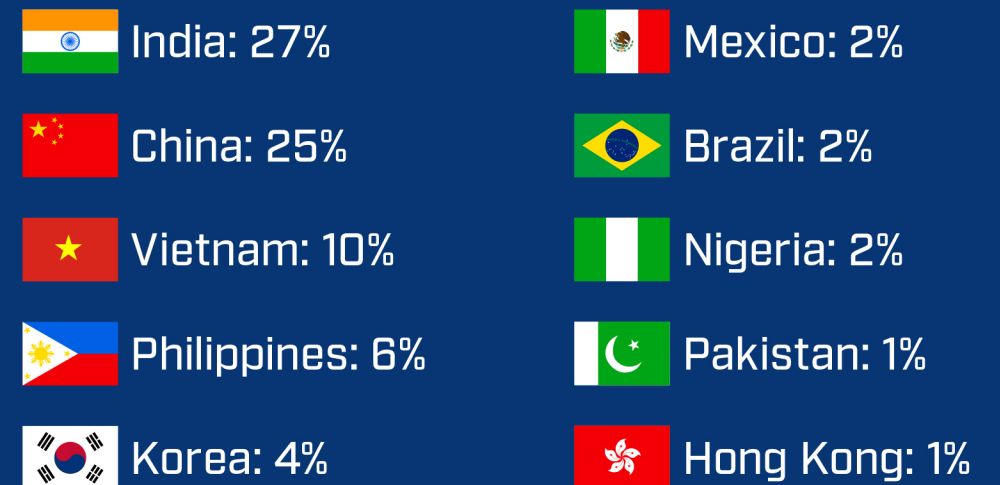


NAIT INTERNATIONAL STUDENTS

INTERNATIONAL STUDENTS BY PROGRAM



COUNTRIES OF CITIZENSHIP [2018]



NAIT



EASILY ACCESSIBLE

CONNECTED BY TRAIN AND BUS

- Located slightly north of Edmonton downtown
- Direct trains and bus to campus
- Convenient to get to student housing at UofA and MacEwan University
- Residences all around NAIT



INTERNATIONAL STUDENT SUPPORT SERVICES

- 6 immigration licensed advisors on campus
- International student peer mentors
- Academic support
- Counsellor for international students

AREAS OF STUDY

- BUSINESS AND MANAGEMENT
- ENGINEERING AND TECHNOLOGIES
- CONSTRUCTION
- ENVIRONMENT AND NATURAL RESOURCES
- COMPUTERS AND IT
- HOSPITALITY AND CULINARY
- DESIGN AND COMMUNICATIONS
- HEALTH AND LIFE SCIENCES
- TRADES

PROOF OF ENGLISH PROFICIENCY:

Most programs require

- IELTS 6.5/5.0
- TOEFL 80/20
- Pearson 55
- Duolingo 115

PROGRAM STATS & FACTS

PROGRAM / INFO	TUITION COST	BOOKS & SUPPLIES	≤1 YEAR AFTER GRAD	
			% EMPLOYED	MEDIAN SALARY
BACHELOR OF TECHNOLOGY	\$19,050	\$750	90%	\$85,500
BIOMEDICAL ENGINEERING TECHNOLOGY	\$19,470	\$1,500	79%	\$64,000
BUSINESS ADMINISTRATION – MARKETING	\$17,700	\$875	81%	\$39,500
LANDSCAPE ARCHITECTURAL TECHNOLOGY	\$19,260	\$1,050	86%	\$46,000
HOSPITALITY MANAGEMENT	\$17,250	\$875	95%	\$39,000
BACHELOR OF APPLIED INFORMATION SYSTEMS TECHNOLOGY	\$21,420	\$1,500	97%	\$55,595

BUSINESS ADMINISTRATION PROVISIONAL ADMISSION

- Admission to Business Administration diploma with slightly lower English proficiency
- Take NAIT ESL Level 6 courses simultaneously in the first 12 months of Business Administration diploma to finish program in 2 years
- Eligible for a regular study permit, not ESL study permit

PROOF OF ENGLISH PROFICIENCY REQUIREMENT

One of the following:

- IELTS 6.0/5.5
- TOEFL 74
- Pearson 50/40
- NAIT ESL Level 5
- Duolingo 100

EXPLORE OUR PROGRAMS

School of Applied Sciences and Technology

Digital Media and IT Web Design and Development Concentration

Apply Now

Need more info? [Learn how to apply.](#)

Start Dates:

Jan 06, 2021

Sep 07, 2021

Jan 05, 2022

Campus: ⓘ

Main

Credential: ⓘ

Diploma

Delivery Options: ⓘ

Online Day, Online
Evening/Weekend

Length: ⓘ

2 Years

Open Studies: ⓘ

Available

International Students: ⓘ

Accepted

Advanced Credit: ⓘ

Available

Overview

What You Will Learn

Career Opportunities

Certification

Contact



The Digital Media and IT (DMIT) program is multi-disciplinary in its approach. Spanning a range of career opportunities from business analyst to visual designer, this innovative program allows you the ability to meet industry demand while developing skills aligned with your individual talents and inclinations.

One of the most powerful marketing tools a business can have is a well-designed and highly functional web presence. The Web Design and Development area of emphasis will teach you the most current web design techniques and best practices for web development and search marketing.

From brochure-style products and service websites to custom web applications, this area of emphasis will arm you with the design, business and technical skills you'll need to build customized web solutions for organizations and individuals.



Grad Employment Rate ⓘ



Median Starting Salary ⓘ

ENGLISH AS A SECOND LANGUAGE (ESL)

ABOUT THE PROGRAM:

NAIT offers 6 levels of ESL instruction, from high beginner (levels 1, 2 and 3) to high intermediate (levels 4, 5 and 6). Students will write a placement test to determine their start level.

Each level teaches speaking and listening, reading and vocabulary, writing and grammar, preparation for academic study at NAIT, and practical skills for studying and living in Canada.

Classes are small, only 15-20 students, focusing on applied learning, group work and hands-on activities.

1 level = 15 weeks (or 1 semester)

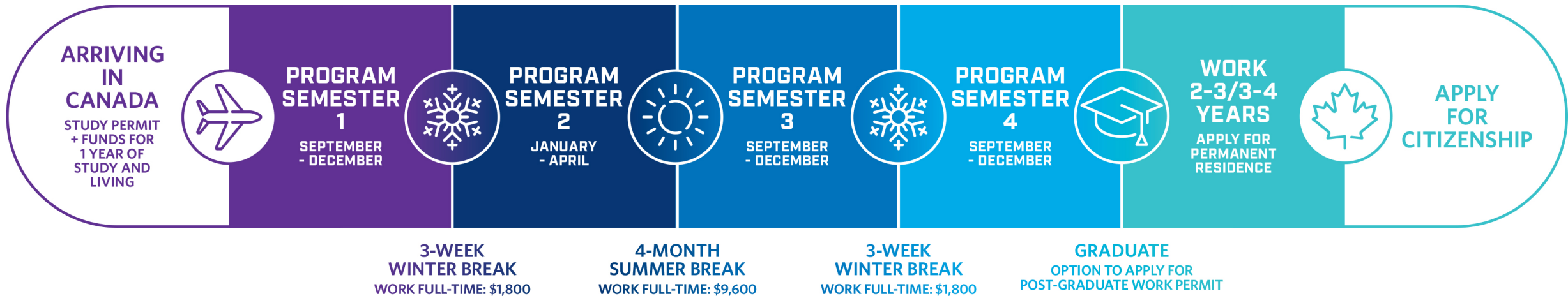
\$4,631.33/level (or 1 full-time semester)
*cost subject to change

WHERE IT CAN TAKE YOU:

Once you complete Level 6, you can apply to most programs at NAIT!

START IN SEPTEMBER, JANUARY OR MAY!
Applicants who meet NAIT's academic entrance requirements, and complete ESL Level 5 with a minimum grade of 60% can get provisional admission into our Business Administration diploma program. Conditions apply.

YOUR PATH TO IMMIGRATION



TUITION, LIVING COSTS, AND PART-TIME WORK (PER SEMESTER)

TUITION: \$8,500

LIVING: \$6,800

WORK PART-TIME: \$4,800

POST-GRADUATION WORK PERMIT

PROGRAM LENGTH

LENGTH OF PGWP

Less than 8 months

Not available

1 year

Up to 1 year

2 years or more

Up to 3 years

APPLICATION STATUS DEFINITIONS

View our application checklist online: <http://www.nait.ca/application-checklist-international>

STATUS	DETAILS	DEFINTION
APPLICANT - APPLICATION RECEIVED	Your online application has been received by NAIT.	No admission decision has been made. You may need to send further information, pay fees to complete your application. Check your MyNAIT portal.
ADMITTED - CONDITIONAL	You have met the requirements of the program; however, you have conditions to your admission.	You may need to upload proof of a study permit approval from immigration Canada, pay fees or other. Check your MyNAIT portal.
ADMITTED - FULL	You have met the requirements of the program.	Your application review is complete. Check your MyNAIT portal for the next steps.
HOLD	WAITLIST - program full	There are no longer seats available, but you have met the program requirements. Check your MyNAIT portal.
	WAITLIST - competitive	There are no longer seats available, but you have met the program requirements. Check your MyNAIT portal.
	WAITLIST - non-competitive applicant	You have not met the competitive requirements for the program, so you are on a secondary waitlist. Check your MyNAIT portal.
CANCELLED	Information not received	Your application has been cancelled because you've failed to meet conditions, or you've been admitted to another program.
	Accepted into first choice	
	Lack academic requirements	
	Failure to pay - deposit	
	Failure to pay - assessment fee	
	Applied in error - applicant has applied to the same program in the same term	

WHAT'S NEXT?

APPLY

WWW.NAIT.CA/APPLYINTERNATIONAL

- Application event

EXPLORE

WWW.NAIT.CA/EXPLORE

- Find Your Future quiz
- Virtual Campus Tour
- Virtual Open House

CONNECT WITH US

WWW.NAIT.CA/HELP

- Facebook @NAITinternational
- Instagram @NAITintl

THANK YOU FOR COMING!

 **ESSENTIAL**

