

## Landscape Treatment Process Flowchart

### Guidance Information

### Supporting Material

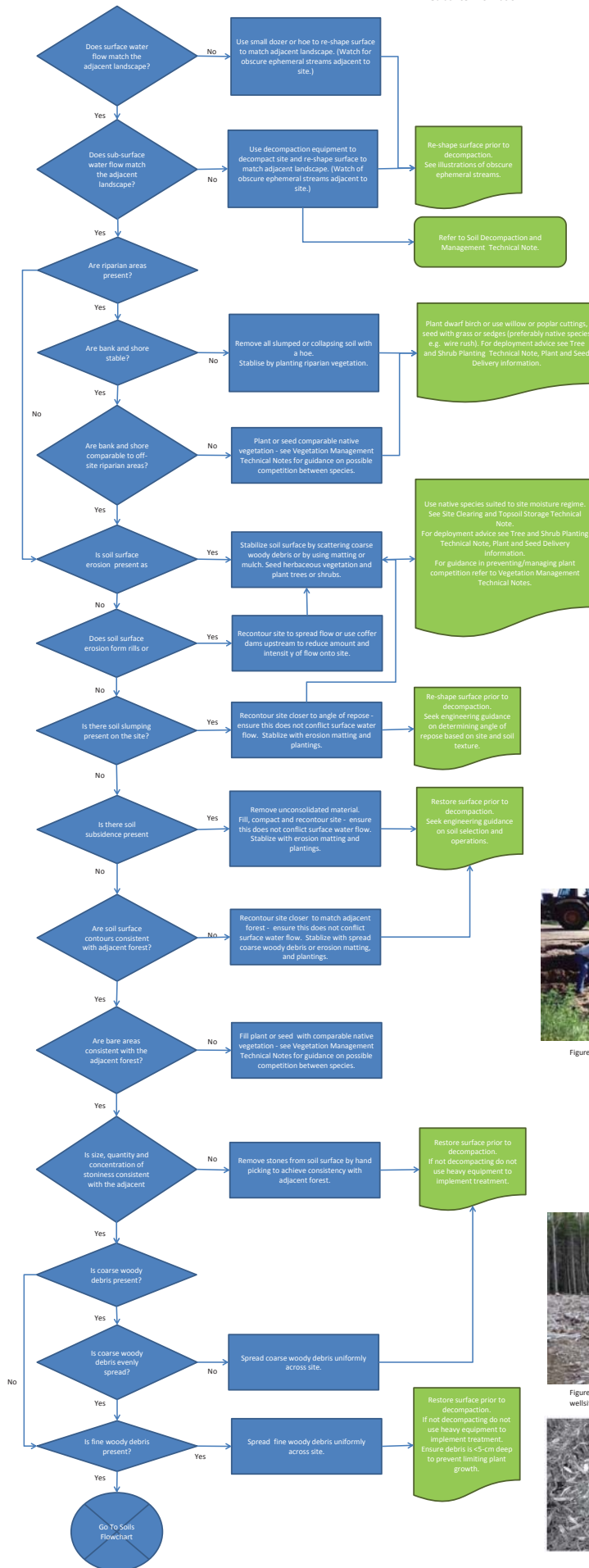


Figure 1. Area where obscure streams are often found.



Figure 2. Typical obscure ephemeral stream (in red circle.)



Figure 3. Typical boreal riparian plant community - Labrador tea, black spruce, etc.



Figure 4. Sheet erosion.



Figure 5. Preparing a site for erosion control matting.



Figure 6. Installing erosion control matting.



Figure 7. Soil subsidence on an access road.



Figure 8. Excavating unconsolidated material prior to backfilling a sinkhole (subsidence.)



Figure 9. Spreading coarse wood debris on a wellsite

