

Alberta Emergency Management Agency Emergency Social Services

A New Way Forward for Provincial ESS

February 23, 2021

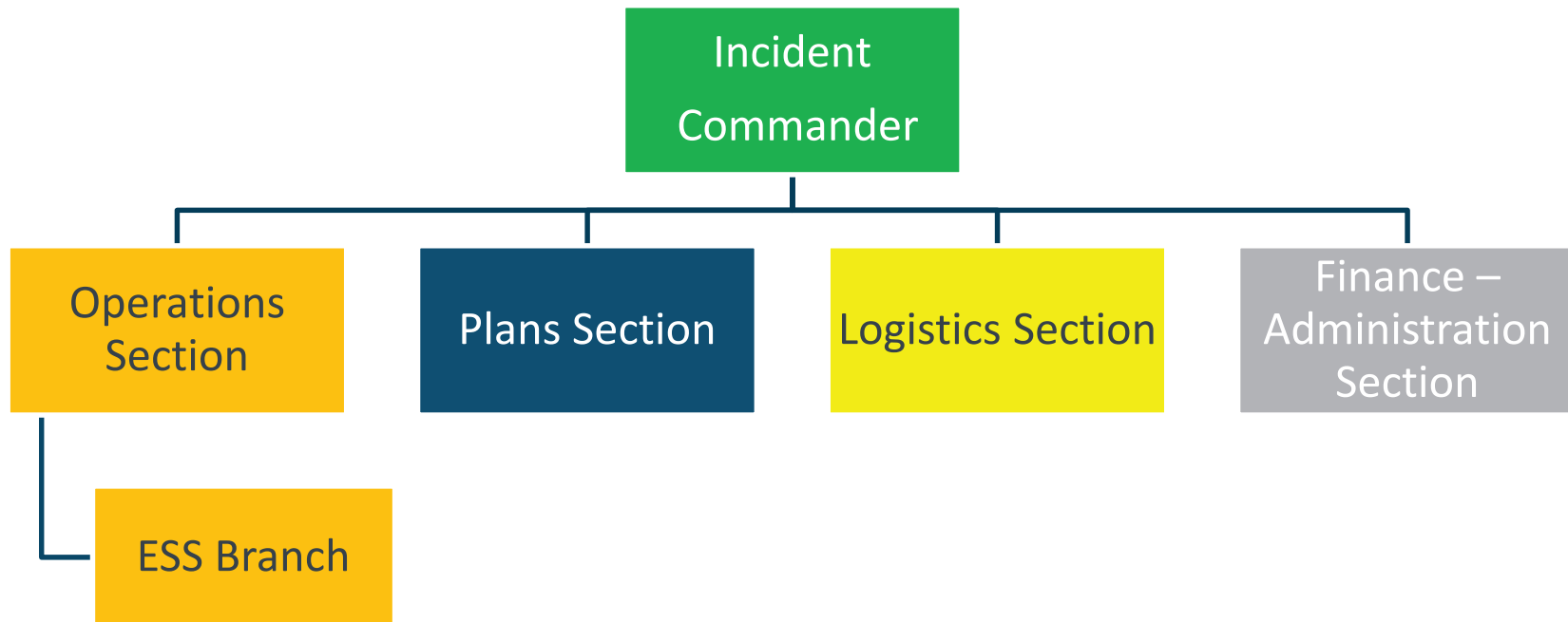
Classification: Protected A



Transfer and Transition

- In November 2020, it was decided:
 - to transfer Provincial Emergency Social Services from the Ministry of Community and Social Services (CSS) to the Ministry of Municipal Affairs (MA)
 - CSS transferred five positions (one manager and four bargaining unit employees) to MA
 - MA assigned the ESS component to Alberta Emergency Management Agency (AEMA)
 - Integrated within AEMA Central Operations

Integration of ESS During Activations





Classification: Protected A

Planned ESS Team – Daily Operations

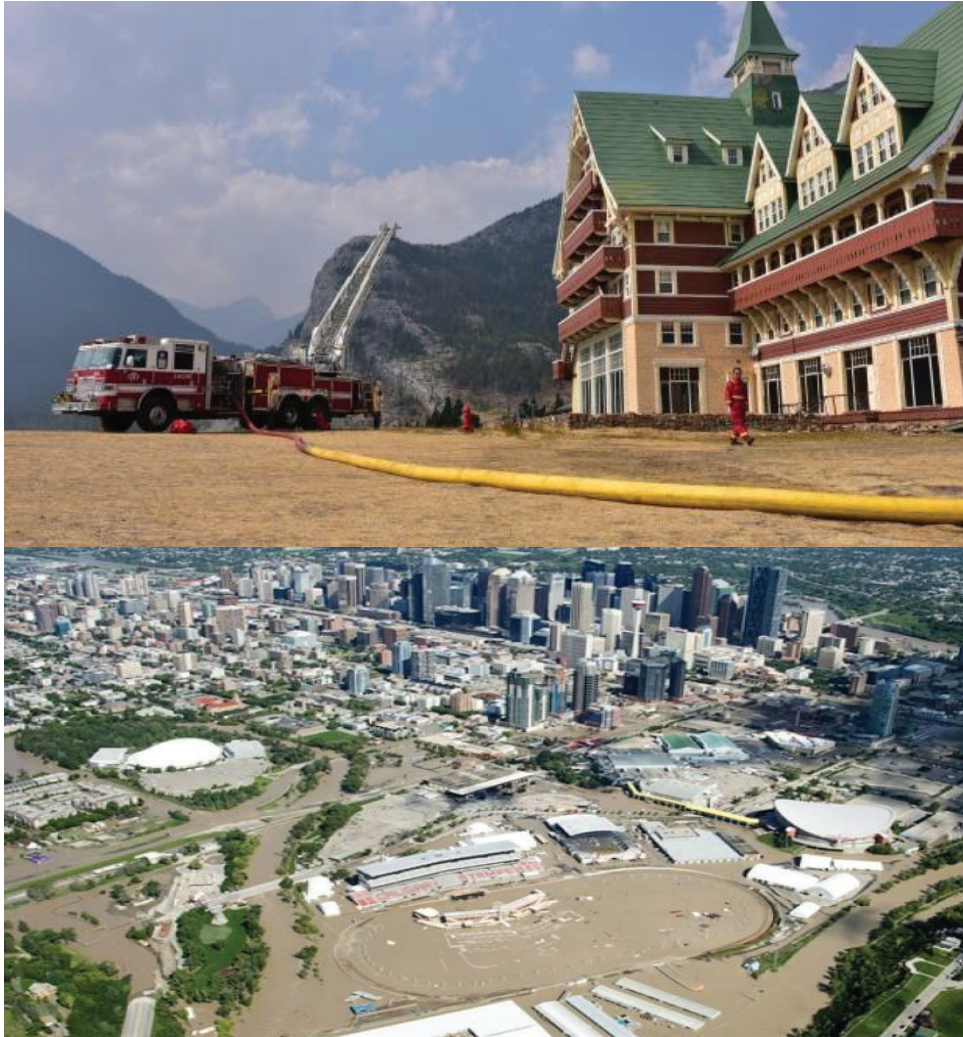
- Integration with the Provincial Operations Centre facilitated a refinement to the ESS lines of effort
- AEMA's ESS lines of effort are now
 - Community Outreach and Engagement
 - Cross Ministry Coordination on ESS Issues

Community Outreach and Engagement

- Working with Municipal, Métis Settlement or, when requested, First Nation ESS representatives
 - Regular coordination on ESS issues, lessons learned
 - Providing ESS education and training programs
 - Coaching and mentoring of ESS staff during local, regional or provincially supported exercises
 - Support in the development, review or revision of ESS plans, processes and procedures

Cross Ministry Coordination on ESS Issues

- Working with Ministry partners and ESS stakeholders in ESS issues
 - Emergency Evacuation Payment (CSS)
 - ESS Costing Guidelines for Disaster Assistance Guidelines (AEMA Recovery)
 - Psychosocial Support Coordination (Alberta Health)
 - Support to Interprovincial Disasters (Municipal Affairs and Service Alberta)



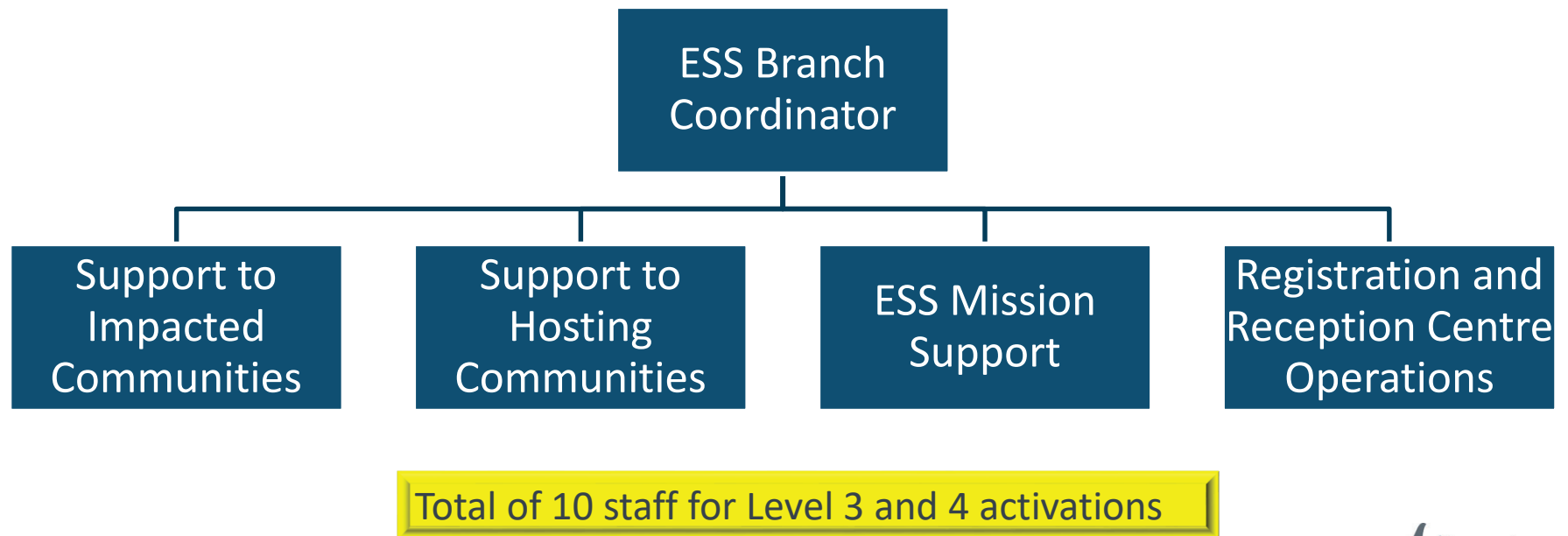
HAPPENING NOW

Fort McMurray Wildfire

Global
NEW

Classification: Protected A

ESS Team Organization - Activation





ESS Projects and Initiatives

- ESS Curriculum and Course Development
 - Task-centric, adult-education based course
- My Alberta Emergency Registration System
 - Smartphone application for emergency registration
- ESS Costing Guidelines for Disaster Assistance Guidelines
- Disaster Transitional Accommodation Plan
- Companion Animal Disaster Response Capability
 - Support to Local Authorities in emergencies or disasters
- ESS Network of Alberta support to POC ESS Branch during large-scale or complex disasters

QUESTIONS?

PESSECC-OPERATIONS@gov.ab.ca

Reg Fountain,
Office: 780-644-1011
Cell: 780-910-9476
reg.fountain@gov.ab.ca