

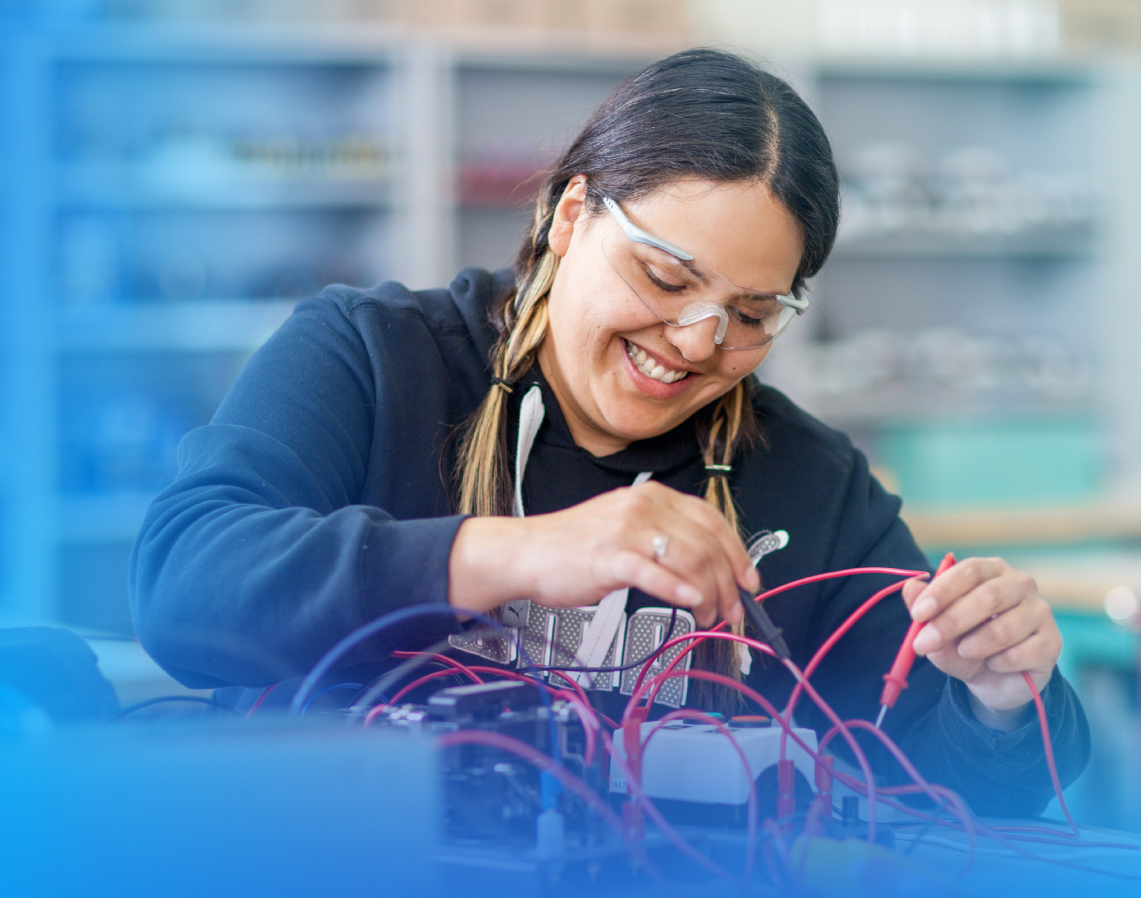
# VIRTUAL OPEN HOUSE

**SATURDAY, OCTOBER 30  
9AM - 4PM MDT**

We've put together this guide to help you make the most of your Virtual Open House experience. We encourage you to check out how to explore Virtual Open House, our program and service booth listing, and the presentation schedule so you can plan your day accordingly.

## **TABLE OF CONTENTS:**

How to Explore Virtual Open House .....	<u>2</u>
Program Showcase: Visit our Program Booths .....	<u>3</u>
Student Supports and Services: Visit our Booths .....	<u>4</u>
Auditorium Presentation Schedule .....	<u>5</u>



# How to explore

We encourage you to [watch our video](#) on how to navigate the platform.

## ACCESS THE EVENT

You'll receive an email with a link to access the event. Click on the button in the email and log in by inputting the email address you used to register. This is also listed in your registration confirmation email.

## CHAT WITH OUR FABULOUS NAIT REPRESENTATIVES

In each booth, use the public chat on the right side of the page. You can also chat with NAIT representatives one-on-one by clicking on their name. Type a message to initiate a written chat. From here you can also start a one-on-one video call.

Tip: NAIT representatives will appear as green if they are active and able to chat with you.

## VISIT OUR PROGRAM AND SERVICE BOOTHS

To visit our program booths, enter the **Program Showcase** using the navigation panel along the left side of the page. To visit our service and support booths, enter the **Student Services & Supports** area using the navigation panel along the left side of the page.

Reference the program booth listing on [page 3](#) and the support and service booth listing on [page 4](#) to determine which booths you'd like to visit to learn more.

Be sure to watch videos and download and save resources at each booth.

## ATTEND OUR PRESENTATIONS

Enter the **Auditorium** using the navigation tab along the left side of the page to attend presentations. We recommend you look at the schedule below ([page 5](#)) to determine which presentations you'd like to attend and which topics you'd like to learn more about.

By clicking on the plus sign, you are able to add sessions into your personal schedule. Use the filter to search your personal schedule or to see sessions that are Live Now.

During each presentation you can ask questions to NAIT representatives in the public chat on the right side of the page.

## VISIT OUR INFO BOOTHS AND GET HELP

If you need help navigating the event, visit the **Help and How to Navigate Open House** tab using the navigation panel along the left side of the page.

If you have questions or want more information about NAIT, we invite you to visit one of our Information Booths located in the Program Showcase area and Student Supports & Services area which can be found along the left side of the page.

Looking for access to tech support? Chat with our tech experts by clicking on the chat icon on the bottom left of the page or email [helpline@nait.ca](mailto:helpline@nait.ca).

## COMPETE IN OUR OOK SCAVENGER HUNT!

Find one-word codes in select Program Showcase booths and Student Support & Services booths (hint: look in the booth descriptions). You can also find one-word codes when you participate in any of our live presentations in the Auditorium. Once you find the codes, enter them and gain points by clicking on **Gamification** on the left side of the navigation panel.

All participants who get over 100 points will automatically be entered into a draw for **one of three NAIT PRIZE PACKS!**

[See full contest details.](#)

We are excited to show you how NAIT can help you be future-ready!

Don't forget to take our [virtual campus tour](#), check out our [digital viewbook](#) and explore [international resources](#).

# Program Showcase

→ Visit our program booths

## SCHOOL OF HEALTH AND LIFE SCIENCES

Animal Health Technology & Veterinary Medical Assistant  
Dental Assisting Technology  
Dental Technology  
Denturist Technology  
Diagnostic Medical Sonography  
Disaster and Emergency Management  
Laboratory and X-Ray Technology Combined  
Magnetic Resonance Imaging - 1st Discipline  
Magnetic Resonance Imaging - 2nd Discipline  
Medical Laboratory Assisting  
Medical Laboratory Technology  
Medical Radiologic Technology  
Optical Sciences  
Personal Fitness Trainer  
Primary Care Paramedic & Advanced Care Paramedic  
Respiratory Therapy

## SCHOOL OF APPLIED SCIENCES AND TECHNOLOGY

Alternative Energy Technology  
Architectural Technology  
Bachelor of Applied Information Systems Technology

Biological Sciences Technology - Conservation Biology  
Biological Sciences Technology - Environmental Monitoring and Assessment  
Biological Sciences Technology - Laboratory Research and Biotechnology  
Biomedical Engineering Technology  
Chemical Engineering Technology  
Chemical Technology  
Civil Engineering Technology  
Computer Engineering Technology  
Computer Network Administrator  
Construction Engineering Technology  
Court Transcription / Captioning and Court Reporting  
Cybersecurity  
Digital Media and IT  
Electrical Engineering Technology  
Electronics Engineering Technology  
Engineering Design Technology  
Forest Technology  
Geological Technology  
Geomatics Engineering Technology

Graphic Communications  
Instrumentation and Control Technician & Instrumentation Engineering Technology  
Interior Design Technology  
Landscape Architectural Technology  
Materials Engineering Technology  
Mechanical Engineering Technology  
Nanosystems Engineering Technology  
Network Engineering Technology  
Occupational Health and Safety  
Petroleum Engineering Technology  
Power Engineering Technology  
Radio and Television  
Water and Wastewater Technician  
Wireless Systems Engineering Technology

## SCHOOL OF SKILLED TRADES

Advanced Plumbing Technology  
Advanced Welding Technology  
Auto Body Repair Pre-Employment  
Auto Body Technician  
Automotive Service Technician

Automotive Service Technician - Pre-Employment  
Automotive Service Technology  
Baking and Pastry Arts & Baker Apprentice  
Boilermaker  
Building Environmental Systems Technology - BEST  
Cabinetmaker  
Carpenter  
CNC Machinist Technician  
Crane and Hoisting Operator - Boom Truck/Mobile Crane  
Culinary Arts & Cook Apprentice  
Electrical Installations Technology  
Electrician  
Gasfitter  
Glazier  
Heavy Equipment Technician  
HVACR Technician  
Industrial Heavy Equipment Technology  
Industrial Mechanic (Millwright)  
Insulator  
Ironworker (Metal Building System Erector)  
Machinist  
Millwork and Carpentry

Outdoor Power Equipment Technician  
Parts Technician  
Plumber  
Power System Electrician  
Powerline Technician  
Professional Meatcutting and Merchandising  
Refrigeration Air Conditioning Mechanic - RACM  
Roofer  
Sheet Metal Worker  
Steamfitter/Pipefitter  
Welder

## JR SHAW SCHOOL OF BUSINESS

Accounting  
Applied Financial Services  
Bachelor of Business Administration  
Bachelor of Technology  
Data Analytics  
Entrepreneurship & Innovation  
Finance  
Hospitality Management  
Human Resources Management  
Management  
Marketing



# Supports and Services

→ Visit our service booths



**ACADEMIC UPGRADING**



**ADMISSIONS & NEXT STEPS**



**ATHLETICS**



**OFFICE OF EQUITY, DIVERSITY AND INCLUSION AND GLOBAL EDUCATION AND PARTNERSHIPS**



**EAT AT NAIT**



**ENGLISH AS A SECOND LANGUAGE (ESL)**



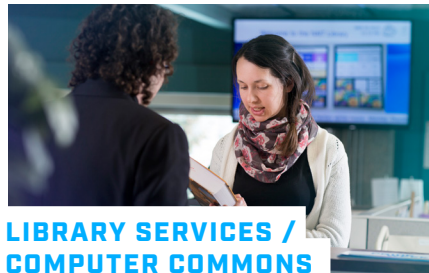
**IMMIGRATION ADVISING AND INTERNATIONAL COMMUNITY**



**INTERNATIONAL RECRUITMENT**



**LEARNING SERVICES**



**LIBRARY SERVICES / COMPUTER COMMONS**



**MAWJI CENTRE FOR NEW VENTURE AND STUDENT ENTREPRENEURSHIP**



**NAITSA**



**NÎSÔHKAMÂTOTÂN CENTRE**



**STUDENT AWARDS AND FINANCIAL AID**



**STUDENT HEALTH & WELL-BEING**



**STUDY AT NAIT / LIVE AT MACEWAN**



# Auditorium

→ Check out our presentation schedule below

## SATURDAY, OCTOBER 30

### 9:00 AM – 9:30 AM MDT

- Be Future-Ready with NAIT
- Choosing NAIT as an International Student (English)

### 9:30 AM – 10:00 AM MDT

- How to Apply to NAIT
- You Applied to NAIT – What's Next?

### 10:00 AM – 10:30 AM MDT

- Explore the JR Shaw School of Business
- Choosing NAIT as an International Student in 廣東話 (Cantonese)

### 10:30 AM – 11:00 AM MDT

- Explore the School of Health and Life Sciences
- An Introduction to the Mawji Centre

### 11:00 AM – 11:30 AM MDT

- Explore the School of Applied Sciences and Technology
- NAITであなたの将来を見つけよう (Japanese)

### 11:30 AM – 12:00 PM MDT

- Explore the School of Skilled Trades
- Student Awards and Financial Aid

### 12:00 PM – 12:30 PM MDT

- Ask a NAIT Student
- Programas Aplicados a la Industria (Impartido en Español) (Spanish)

### 12:30 PM – 1:00 PM MDT

- Explore the School of Skilled Trades
- Be Future-Ready with NAIT

### 1:00 PM – 1:30 PM MDT

- Explore the JR Shaw School of Business

### 1:30 PM – 2:00 PM MDT

- Explore the School of Applied Sciences and Technology

### 2:00 PM – 2:30 PM MDT

- Explore the School of Health and Life Sciences

### 2:30 PM – 3:00 PM MDT

- How to Apply to NAIT

### 3:00 PM – 3:30 PM MDT

- You Applied to NAIT – What's Next?

For presentation descriptions, visit the **Auditorium** during Virtual Open House

