



Ideal photo



Ideal photo



Too far

Photos taken from a very long distance away.



Too close

Photos where only the face is visible, without the neck or shoulders.



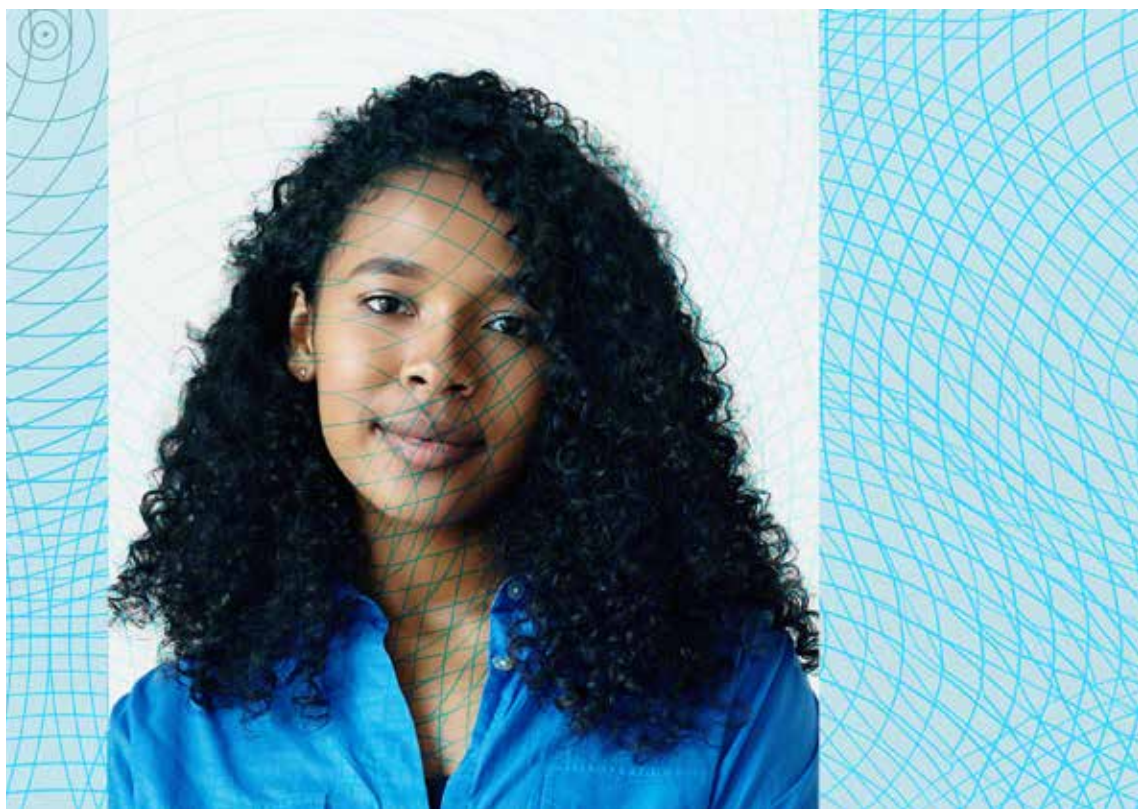
Head chopped off

Selfies taken from a higher angle, excluding the forehead and/or top of the head.



Photo has a filter

Photos with filters (e.g., black and white, or with hearts or stars).



Not an original image

Photos of passport photos or similar.



Head or face covered

Photos with hats and/or sunglasses.



Not looking directly at the camera

Side profile photos, often taken from far away.



Not a plain, light-colored background

Photos taken in locations like the driver's seat of a car.