



NORTHERN ALBERTA INSTITUTE OF TECHNOLOGY

Top 10 research colleges
in Canada



WHY STUDY AT NAIT?



EMPLOYER
SATISFACTION

NAIT graduates have the skills and knowledge that employers are looking for! **A high employer satisfaction rate** means employers will likely recruit graduates from NAIT.



EMPLOYMENT

You can see the specific employment rates for each of our programs at nait.li/employmentrate.



SMALL
CLASSES

Our class sizes span from **20 to 40 students.**



THEORY/
APPLICATION

NAIT students **apply theory in class and in work placements.** Traditional universities teach using 80/20 theory to application ratio.



SHORT, 2-YEAR
PROGRAMS

NAIT is a **designated learning institution.** The majority of our programs are eligible for a study permit and the post-graduation work permit program in Canada.

POLYTECHNIC EDUCATION AT NAIT



Tech-based education

Our programs use state-of-the-art technology and facilities.



Industry partnership

NAIT works closely with the companies who employ our students upon graduation to ensure our curriculum is relevant to industry needs.



Applied research

Put your knowledge to practice in real-world challenges.



Hands-on learning

Work placement opportunities are available in many of our programs. Our students learn in labs using equipment that is currently used in industry. See naait.ca/wil for details.

In Canada, polytechnics, universities and colleges are the same level of study.

NAIT PROGRAM AREAS

**Business
and Management**

Computers and IT

Construction

**Design and
Communications**

**Engineering
Technologies**

**Environment and
Natural Resources**

**ESL and Academic
Upgrading**

**Health and
Life Sciences**

**Hospitality
and Culinary**

Skilled Trades

Take our **Find Your Future** quiz to find out which programs would match your skills and interests.

nait.ca/findyourfuture



ENTRANCE REQUIREMENTS

Academic Requirements

Entrance requirements vary by program. Check them for your program of interest on the NAIT program webpage under how to apply at nait.ca/programs.

Academic achievement from outside Alberta will be assessed for equivalency.

ALBERTA LEVEL	FOR EXAMPLE:	CANADIAN HIGH SCHOOL	OVERSEAS HIGH SCHOOL
30	English 30-1	Grade 12	Year 3
20	Biology 20	Grade 11	Year 2
10	Science 10	Grade 10	Year 1

English Language Proficiency (ELP)

English language proficiency is required for students who did not study in an ELP-exempt country.

NAIT requires academic English language scores:

ASSESSMENT TEST/ EDUCATION	MINIMUM SCORE
IELTS Academic	6.0/6.0
TOEFL	80/20
Duolingo	115/100
PTE Academic	58

NAIT also accepts English language pathway programs from specific schools. For more information, visit nait.ca/elp

ADMISSIONS

International Document Requirement

Submit your official documents to NAIT

- ▶ High school transcripts and certificates OR **Self-Reported International Courses Form** (if currently attending high school)
- ▶ Post-secondary school transcripts and certificates (if applicable)
- ▶ Proof of English Language Proficiency (if applicable)

How to apply

1. **Apply online** for up to two programs. \$150 CAD.
2. Create your **MyNAIT Portal** account.
3. Upload required documents onto your MyNAIT Portal.
4. Send original documents to NAIT campus.
5. Track your application on your MyNAIT Portal.
6. Accept your offer and pay \$5,000 CAD deposit on your MyNAIT Portal.
7. A Provincial Attestation Letter (PAL) will be issued on your MyNAIT portal.
8. **Apply for a Study Permit.**

AUGUST 1, 2024: Applications open for SEPTEMBER 2025

JANUARY 1, 2025: Applications open for JANUARY 2026

APRIL 1, 2025: Applications open for MAY 2026

See **nait.ca/international-admissions** checklist for details.

STUDENT TESTIMONIALS



Natalia

Brazil, Entrepreneurship & Innovation BBA

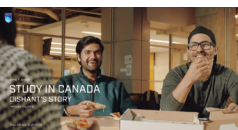
"There are amazing people all around NAIT, who are willing to help. Willing to listen. Willing to see me for who I am. Who I am becoming."



Karen

Colombia, Business Administration

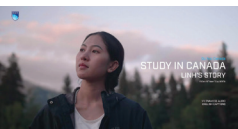
"I realized that I wanted to go on my own journey and to study in a place that would give me a competitive advantage in my career."



Dishant

India, Bachelor of Technology

"I still remember seeing campus for the first time. I felt excited for my first semester. My instructors challenged me to dig deep and look at things in a new way."



Linh

Vietnam, Engineering Technology

"I'm so glad I chose to study at NAIT. It's one of the best decisions I've ever made."

See their full stories at nait.ca/international. Talk to a student ambassador to learn more about their experience at NAIT: nait.ca/chatwithastudent

EDMONTON, ALBERTA, CANADA



Employment by industry in Edmonton:

1. SALES AND SERVICES
2. GOODS PRODUCTION
3. TRADES/EQUIPMENT
4. HEALTH
5. CONSTRUCTION
6. PROFESSIONAL SCIENTIFIC AND TECHNICAL SERVICES
7. EDUCATION
8. FORESTRY/FISHING/MINING/OIL AND GAS
9. ACCOMMODATION AND FOOD SERVICES
10. TRANSPORTATION AND WAREHOUSE

Edmonton:

- ▶ **Capital city of Alberta** - political, technology and business hub
- ▶ **3rd highest immigrant retention rate in Canada** (Statistics Canada 2022)
- ▶ **Population: 1.4 million**
- ▶ **Average age: 38 years** (41 years in Canada)
- ▶ **Lower living costs** compared to other urban cities in Canada

Canada's Festival City

From **Latinfest**, **Heritage days**, **Folkfest**, **Lunar New Year**, **Cariwest**, **Luminaria** and many more. Edmonton always has a festival to enjoy and take a part in.

Edmonton also has the **largest urban parkland in North America** - it is ten times the size of Central Park in New York; you can enjoy **over 20 parks** and **over 150 km** of trails for walking, biking, skating and skiing!

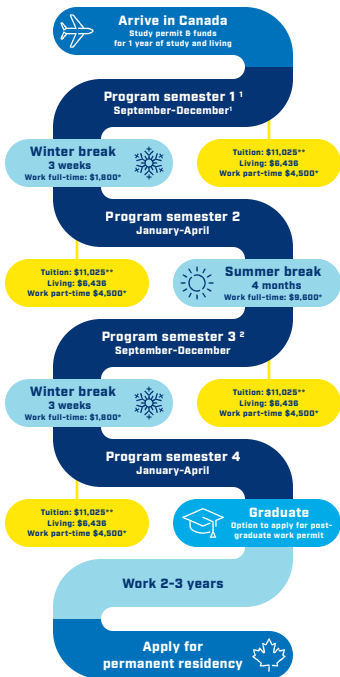
NAIT MAIN CAMPUS

NAIT has the **3rd largest campus in Alberta**. Located slightly north of Edmonton downtown. The campus includes:

- ▶ **DIRECT TRAIN AND BUSES**
- ▶ **24/7 PROTECTIVE SERVICES**
- ▶ **FITNESS & RECREATION PROGRAMS**
- ▶ **INTERNATIONAL AND INTERCULTURAL COMMUNITY CENTRE**
- ▶ **NAITSA CLUBS AND EVENTS**
- ▶ **STUDENT HOUSING OPTIONS AVAILABLE AROUND THE CAMPUS**



STUDY > WORK > IMMIGRATE



¹ Some programs have the option to start in January and May. See program pages for details.

² Entrance scholarships and numerous scholarships are available for international students.

³ Multiple short immigration pathways available in Alberta.

* Earning potential are estimates only based on Alberta's minimum wage of \$15/hour.

** Prices may vary between programs. See nait.ca for details. All amounts are in CAD\$. The above path is only an example of costs and potential immigration pathway. Immigration to Canada is governed by federal regulations.

BENEFITS OF LIVING IN ALBERTA



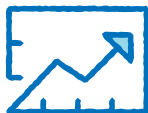
Alberta is **Canada's richest province**, is the only province that does not have provincial sales tax and has the lowest income tax rate in Canada!



Alberta residents have **free healthcare**



Alberta has the **highest household income** in Canada



Alberta among the **highest economic growth regions** in 2023

LIVING COSTS AND EMPLOYMENT

Living costs in Edmonton per month [in CAD\$]

Housing	\$1,064/month [1 bedroom]
Food	\$300*
Other	\$245*
<hr/>	
Total:	\$1,609/month*

* Estimated average; may be updated periodically or change without notice.

Estimated earning potential [in CAD\$]

Working part-time:

$$\begin{aligned} & \$15/\text{hour} \times 20 \text{ hours per week} \\ & \hline = \$300 \text{ per week} \\ & \hline = \$4,500 \text{ per semester} \end{aligned}$$

Working full-time:

$$\begin{aligned} & \$15/\text{hour} \times 40 \text{ hours per week} \\ & \hline = \$600 \text{ per week} \\ & \hline = \$1,800 \text{ per winter break} \\ & \hline = \$9,600 \text{ per summer break} \end{aligned}$$

ESL and Academic Upgrading students can work on-campus.

Degree/diploma/certificate students can work off-campus 24 hours/week, and unlimited hours during scheduled breaks, and on-campus.

CONNECT WITH US

[**nait.ca/international**](http://nait.ca/international)



Register for our newsletter to get more information about our programs and events: [**nait.ca/signup**](http://nait.ca/signup)

Book an appointment with an international student recruiter:

[**nait.ca/intlrecruiter**](http://nait.ca/intlrecruiter)

Questions? [**nait.ca/ssc**](http://nait.ca/ssc)

Follow us on social media:



[**NAITInternational**](https://www.facebook.com/NAITInternational)



[**NAITintl**](https://www.instagram.com/NAITintl)



[**@NAIT.official**](https://www.youtube.com/NAIT.official)

11762 - 106 St., Edmonton, Alberta
T5G 2R1 Canada

Designated Learning
Institution Number
(DLI #) O18713200642
Member of AIEA,
CACUSS, CBIE,
CICan, Conahec and
Polytechnics Canada.



EduCanada®
A world of possibilities
Un monde de possibilités